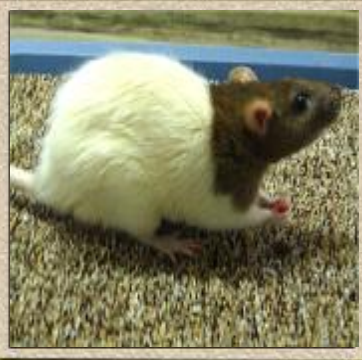


Species Fact Sheet



MAMMALS

<http://www.peoriazoo.org/mammals.html>

Norway Rat

Rattus norvegicus

Peoria Zoo Exhibit Education Programs

<http://www.peoriazoo.org/education.html>

Habitat: Native to forest and brushy areas, now finds it preferable to live next to the human population

Range: Originally east Asia and Japan, now can be found on every continent but Antarctica

Activity Cycle: Nocturnal– active at night

Size: Adults usually get to be about 1-2 pounds

Social Structure: Social animals
Male dominated groups
Parental care is provided by the females. They nest communally with many litters occupying the same nest.

Distinguishing Features: Pointed nose with whiskers-allowing an excellent sense of smell and touch
Black, beady eyes-eyesight is poor
Long, scaly tail that helps with balance when climbing
Commonly brown in the wild, found in all colors in captivity.

Diet: Grains, meats, fish, nuts, fruit-will eat almost anything but prefers fresh foods

Life Span: 2-4 years

Did you know?

Rats were unintentionally introduced to North America by settlers arriving on ships. First introduced to the United States in the 1700s, they are now found throughout the contiguous 48 states.